

PATTERN NOTES

This shawl is a creative way to show off Aalta To Go!'s unique and interesting color-changing effect. The color combinations provide harmonious balance and the gradient dye technique creates a dynamic transition between colors.

MATERIALS

- » One 200g skein of Aalta To Go!
- » Stitch Markers (m)
- » Size US 5 (3.75 mm) or size needed to obtain gauge

FINISHED SIZE

- » One Size
60" Wingspan
30" height at midpoint

GAUGE

22 sts = 4"
in lace st pattern

Lamaina Triangle Lace Shawl

DESIGNED FOR AALTA YARN



Aalta Yarn



www.AaltaYarn.com

DIRECTIONS FOR LAMAINA TRIANGLE LACE SHAWL

BODY

- » Set Up: CO 11 sts. Place a st marker on each side of center stitch.
Work Rows 1-10 of Chart A Slipping ms as you go-31 sts.
- » Rows 11-22: Work Rows 1-12 of Chart B, repeating the outlined sts on each side of center panel once-55 sts.
- » Rows 23-34: Work Rows 1-12 of Chart B, repeating the outlined sts on each side of center panel twice-79 sts.
- » Continue in pattern as established, increasing the number of repeats worked on each side of center panel by one every 12 rows, 10 more times-319 sts.
(12 repeats on each side of center panel)

EDGING

- » Chart C-First Part of Edging:
Work Rows 1-12 of Chart C, repeating the outlined sts on each side of center panel 6 times-343 sts.
- » Chart D-Second Part of Edging:
Work rows 1-16 of Chart D, repeating the outlined sts on each side of the center panel 7 times-361 sts.
- » Bind Off
- » Finishing:
Block to measurements
Weave in ends

Note: This pattern is for a triangular shawl worked from the top down. The Charts Show RS rows only. To work WS rows, Knit the Knit sts, purl the purl sts and the yo sts

CHARTS AND LEGEND



Aita Yarn

Legend

- Knit
- p2tog tbl - purl 2 sts together through back loop
- p2tog - purl 2 sts together
- yo - yarn over
- purl
- ssk - slip 2 sts then knit together through back loop
- K2tog - Knit 2 sts together
- repeat
- p3tog - purl 3 sts together
- Knit into the front and back loops of the st
- slip 1 st, knit 2 sts together, pass slipped st over
- K3tog - Knit 3 sts together

Chart A

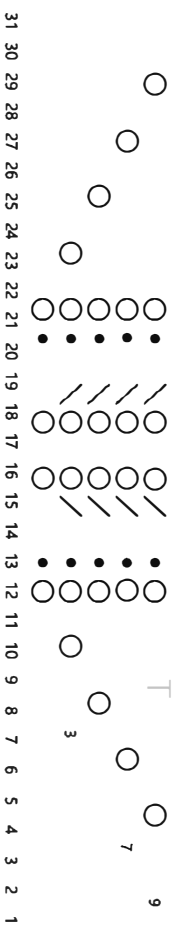


Chart B

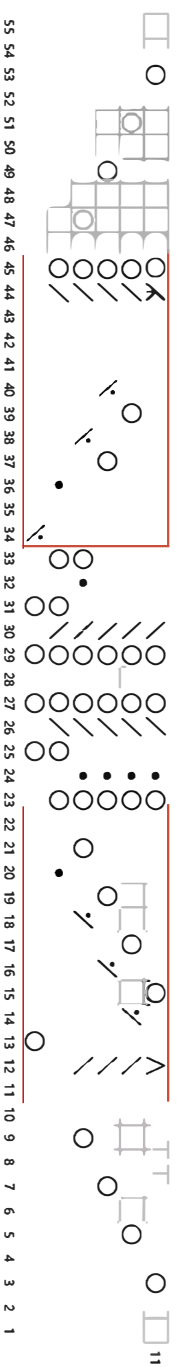


Chart C

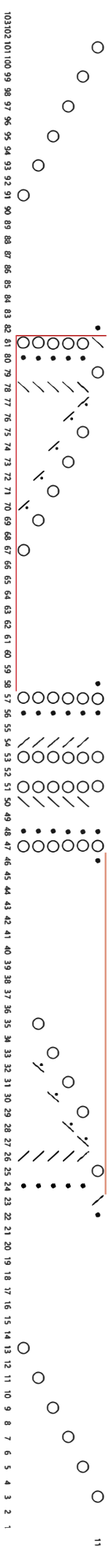


Chart D

